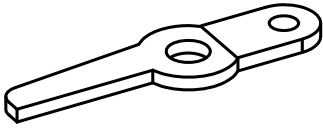


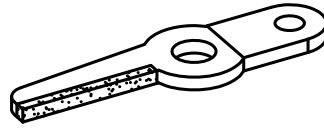
5420 - LOWER (BOBBIN) SCISSORS 14699.0751.1/0



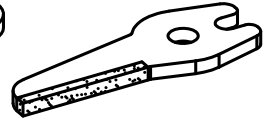
○ 5421
16020-1312-0/0
16020-0719-1/0
(OLD>AV-0060-025)
(OLD>AS-0351-9)



○ 5422
16020-1313-0/0
16020-0720-2/0
(OLD>AV-0060-028)
(OLD>AS-035-12)

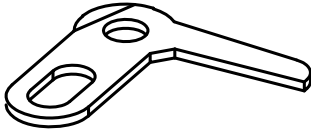


● 5423

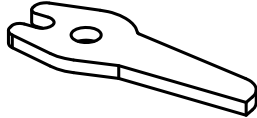


● 5424

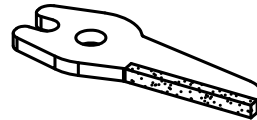
5430 - UPPER (TENSION) SCISSORS ESPERO 14699.0750.1/0



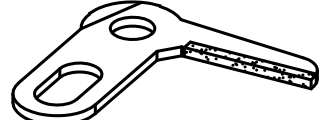
○ 5431
16020 0724 3/0
(OLD>AS-0421-16)
36016.0001/0



○ 5432
16020 0723 3/0
(OLD>AS-0421-15)
36026.0002/0



● 5434

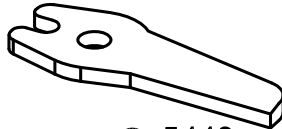


● 5433

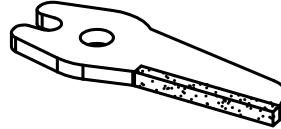
5440 - UPPER (TENSION) SCISSORS ORION



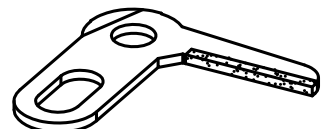
○ 5441
16810.0704.0/0
(OLD>AS-4250-10)
0166401.14.16020.1253.010



○ 5442
16810.0705.0/0
(OLD>AS-4250-9)
0166401.16020.1252.010

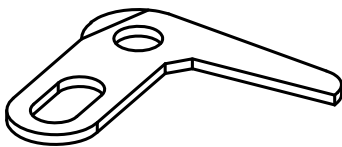


● 5444

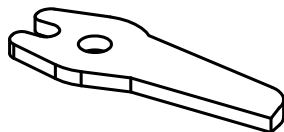


● 5443

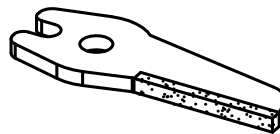
5500 - UPPER (TENSION) SCISSORS POLAR



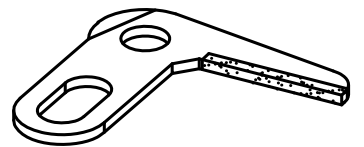
○ 5501
16020-1126-0-0.
166401.14.16020.1253.010
15.16620.0987.0/0



○ 5502
16020-1125-0-0.
0166401.15.16020.1253.010
14.16020.0988.0/0

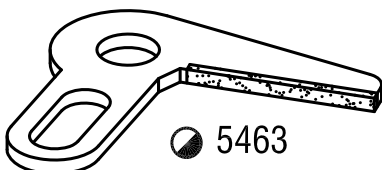


● 5504

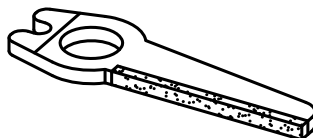


● 5503

5460 - UPPER (TENSION) SCISSORS



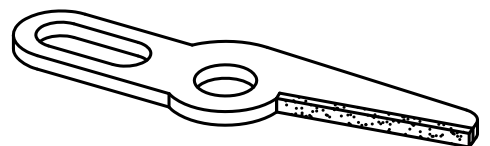
● 5463



● 5464

● 5474

5470 - LOWER (BOBBIN) SCISSORS



● 5473

MATERIAL CODE : ● SOLID CARBIDE , ○ HSS , ● BRAZED CARBIDE , ○ TIN COATED