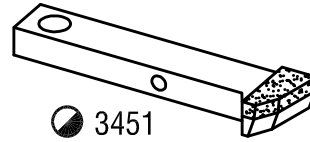




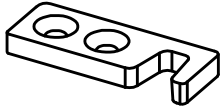
● 3452



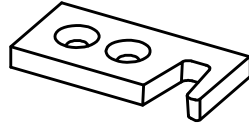
● 3451

3450 - R2000 (WEFT)

50° COUNTER



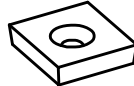
● 3491
025-806-001



● 3493

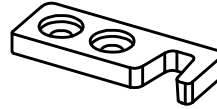


● 3492
025-452-201

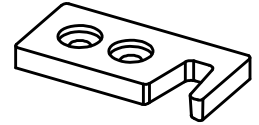


● 3494

90° COUNTER



● 3495 (90 COUNTER)
025-806-001



● 3497 (90 COUNTER)



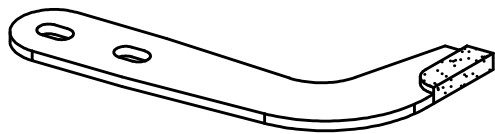
● 3496
025-452-201



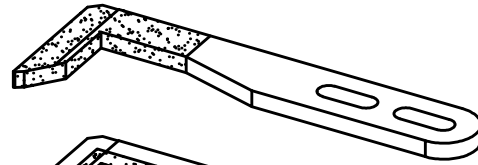
● 3498

SUPPLY WITH SCREW

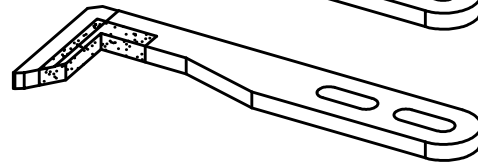
3490 - F2001 / G6100 / G6200 (WEFT)



● 3833
PNO 51772



● 3832
PNO 51720

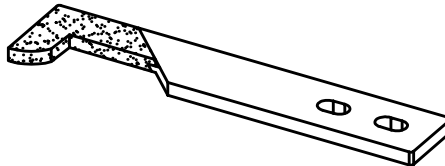


● 3834

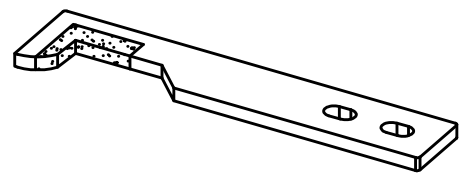
3830 - G6300, GS900, GS950 FAST (WEFT)



● 3841
PBO 38559

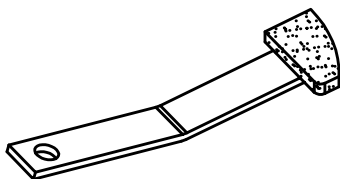


● 3842
PBO 38556

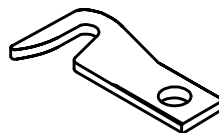


● 3844

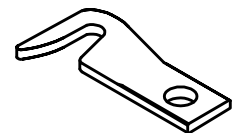
3840 - TP600 (WEFT)



● 3891
617.452.000
627331000
627.208.000



● 3892
624.623.000
62720800
627720800
629.113.000



● 3896
90° COUNTER
(ALONG WITH SCREW)

3890 - G6200 (WEFT)

MATERIAL CODE : ● SOLID CARBIDE , ○ HSS , ◐ BRAZED CARBIDE , ⊙ TIN COATED