

**PAWAN BANDH P170** yarn splicers work on compressed air & are used for splicing variety of synthetic filament yarns. Pawan Bandh is made up of precision machined metallic components assembled in Aluminum body. This automatic splicer works on differential pneumatic logic.



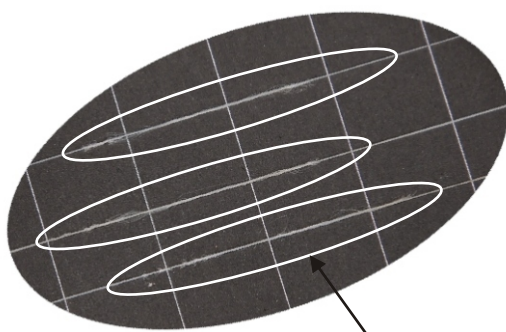
## SPECIFICATION

APPLICATION FIELD : POY, FDY, DTY, DTEX MACHINE  
 OPERATING PRESSURE : 4 - 6bar (kg/cm<sup>2</sup>)  
 MAX PERMISSIBLE TWIST : 150 (tpm)  
 WORKING PRINCIPLE : TWISTING  
 OVERALL DIMENSION : 185 X 120 X 40mm  
 AIR CONNECTION : 10 mm ID HOSE PIPE  
 WORKING METHOD : AUTOMATIC  
 WEIGHT : 1.250 gms  
 CHAMBER : 2 TYP  
 SPLICE LENGTH : 17mm

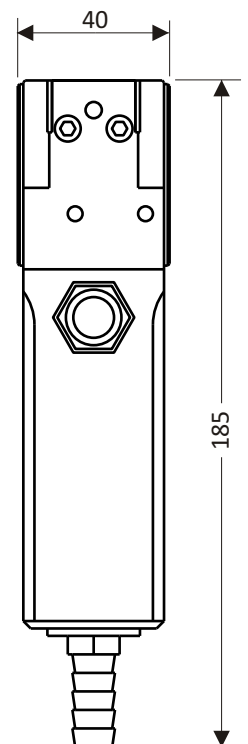
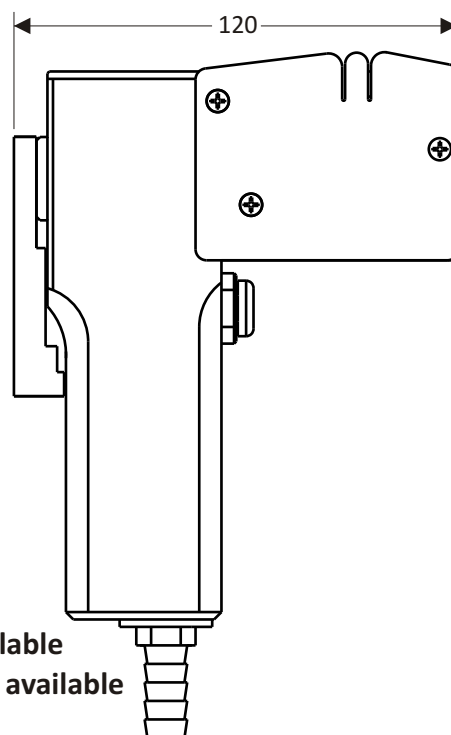
## APPLICATION

FINE DENIER VISCOSE OR FILAMENT YARN

SUITABLE FOR	YARN RANGE
1 : SYNTHETIC	20 - 400 dtex
2 : CELLULOSE	40 - 300 dtex
3 : CARBON FIBER	650 - 2000 dtex
4 : GLASS FIBER	34 - 136 tex



SPLICE YARN



- > Operation & Maintenance Training Services available
- > Spare part / Reconditioning / Repairing Services available
- > Other Modification on Request.