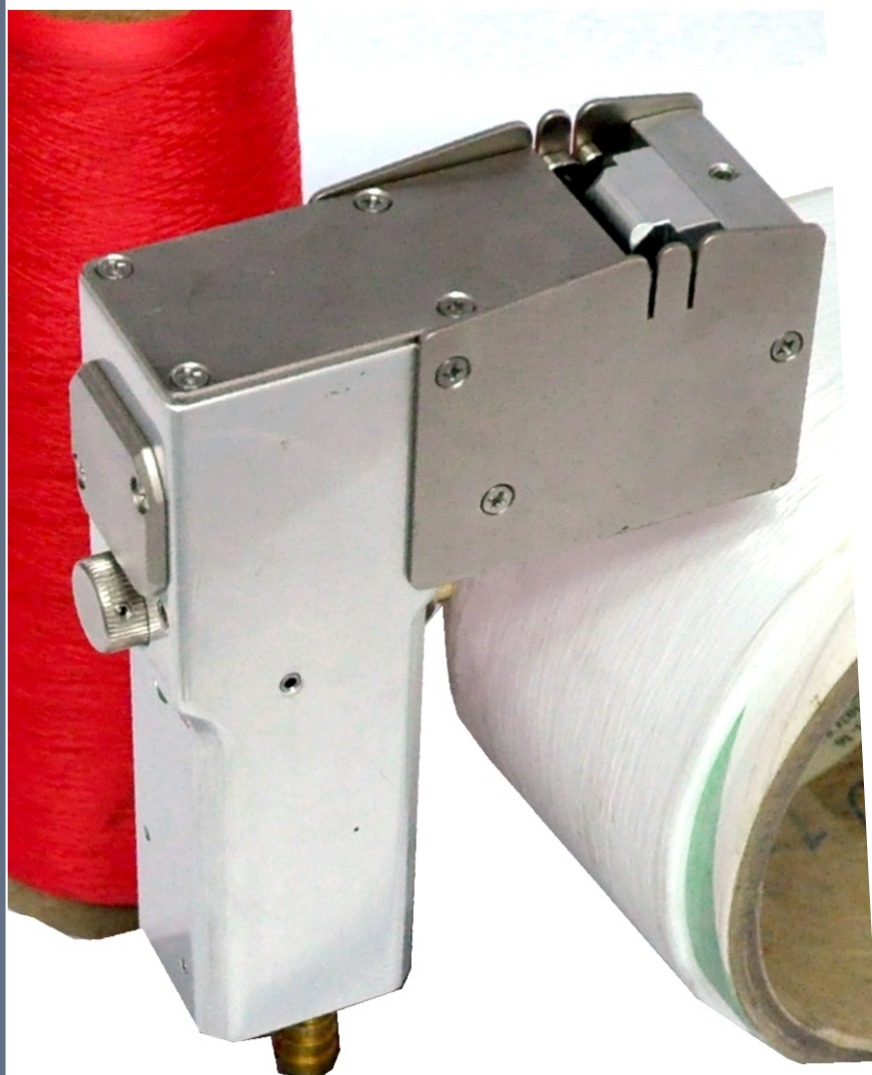


PAWAN BANDH P170 yarn splicers work on compressed air & are used for splicing variety of synthetic filament yarns. Pawan Bandh is made up of precision machined metallic components assembled in Aluminum body. This automatic splicer works on differential pneumatic logic.



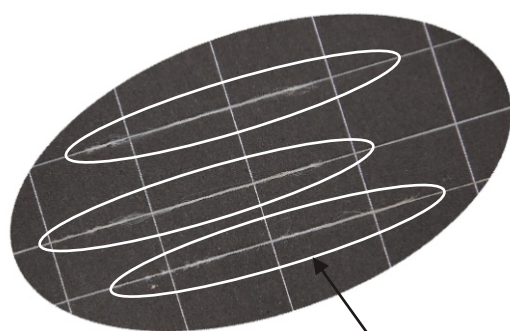
SPECIFICATION

APPLICATION FIELD : POY, FDY, DTY, DTEX MACHINE
 OPERATING PRESSURE : 4 - 6bar (kg/cm²)
 MAX PERMISSIBLE TWIST : 150 (tpm)
 WORKING PRINCIPLE : TWISTING
 OVERALL DIMENSION : 185 X 120 X 40mm
 AIR CONNECTION : 10 mm ID HOSE PIPE
 WORKING METHOD : AUTOMATIC
 WEIGHT : 1.250 gms
 CHAMBER : 2 TYP
 SPLICE LENGTH : 17mm

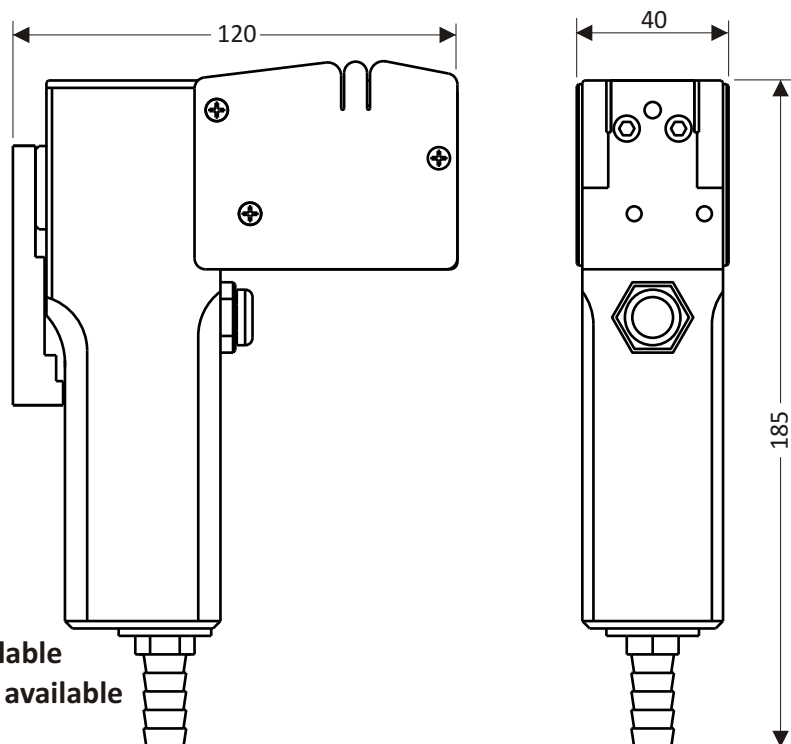
APPLICATION

FINE DENIER VISCOSE OR FILAMENT YARN

SUITABLE FOR	YARN RANGE
1 : SYNTHETIC	20 - 400 dtex
2 : CELLULOSE	40 - 300 dtex
3 : CARBON FIBER	650 - 2000 dtex
4 : GLASS FIBER	34 - 136 tex



SPLICE YARN



- > Operation & Maintenance Training Services available
- > Spare part / Reconditioning / Repairing Services available
- > Other Modification on Request.