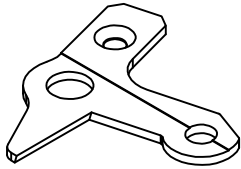
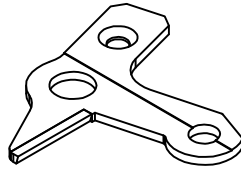


# FOR SCHLAFHORST 238

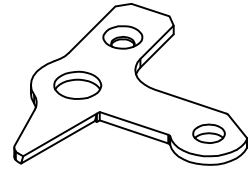
## SCHLAFHORST 5080 - SPLICER SCISSOR



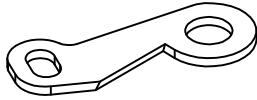
○ 5081  
230 56801 146006265



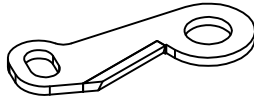
● 5083



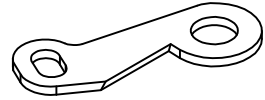
▶ 5087



○ 5082  
225 56801 146012426

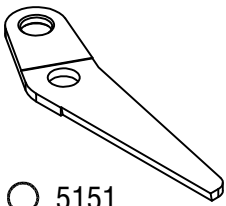


● 5084

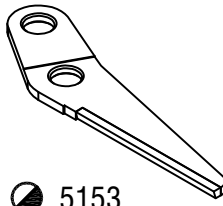


▶ 5088

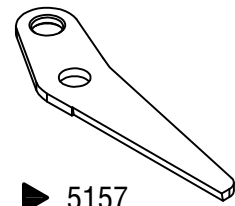
## SCHLAFHORST 5150 - LOWER SCISSOR



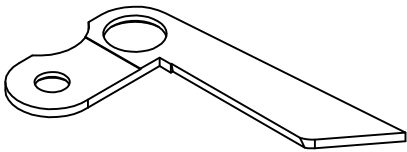
○ 5151  
50 40168 138015744



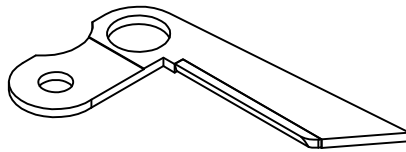
● 5153



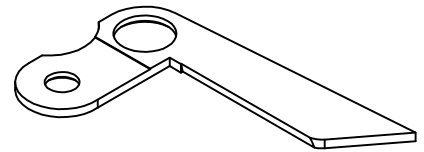
▶ 5157



○ 5152  
44 40168 138012218

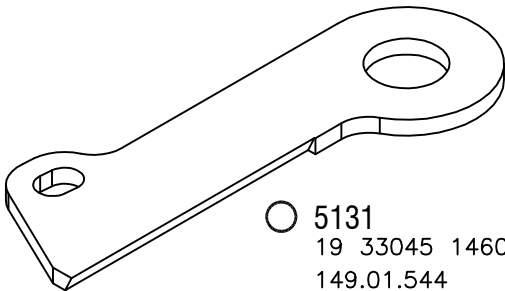


● 5154

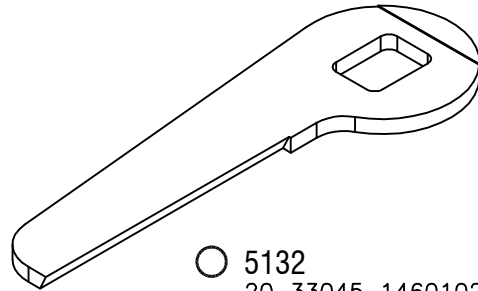


▶ 5158

## SCHLAFHORST 5130 - SUCTION TUBE

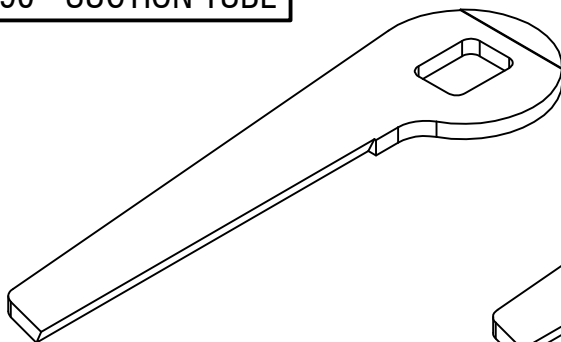


○ 5131  
19 33045 146010280  
149.01.544

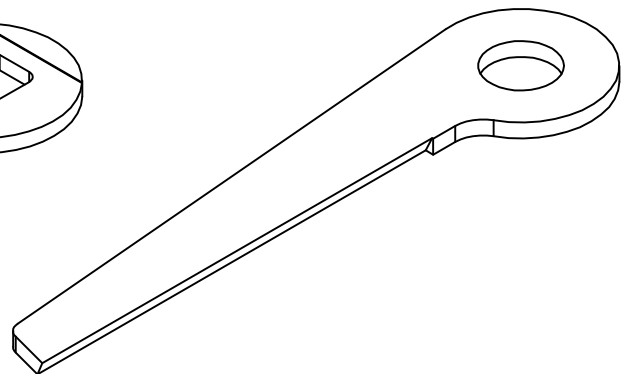


○ 5132  
20 33045 146010281  
149.01.584

## SCHLAFHORST 5090 - SUCTION TUBE



○ 5091  
20 33045 146000628

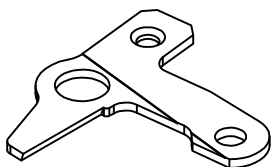


○ 5092  
19 33045 146000627

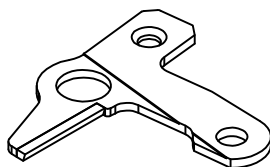
MATERIAL CODE : ● SOLID CARBIDE , ○ HSS , ◐ BRAZED CARBIDE , ▶ ZIRCONIA CERAMIC ○● TiN COATING

# FOR SCHLAFHORST 338

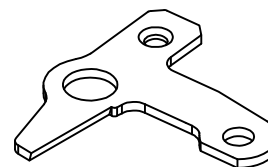
## SCHLAFHORST 5180 - SPLICER SCISSOR



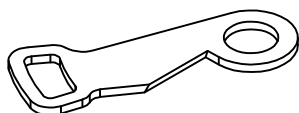
○ 5181  
(5691)  
255 36801 148002746



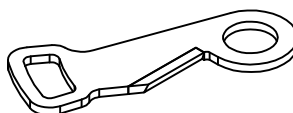
● 5183  
(5693)



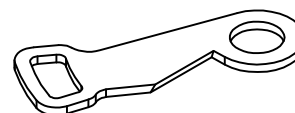
▶ 5187  
(5697)



○ 5182  
250 36801 148005258

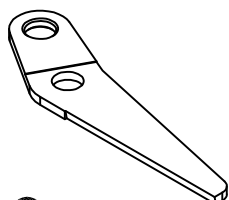


● 5184

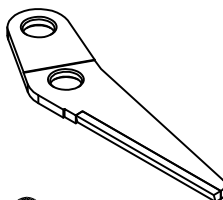


▶ 5188

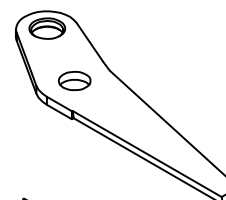
## SCHLAFHORST 5150 - LOWER SCISSOR



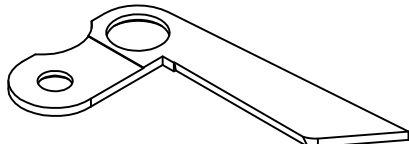
○ 5151  
20 36060 138015744



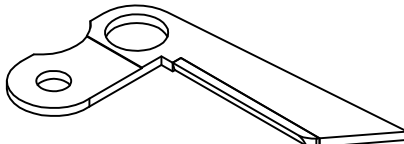
● 5153



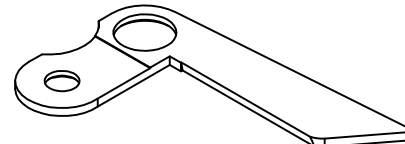
▶ 5157



○ 5152  
16 36060 148012218

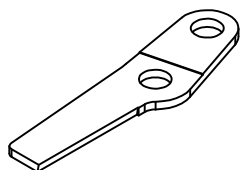


● 5154

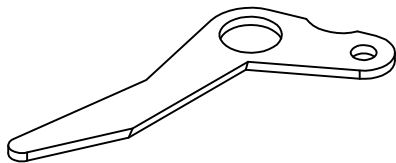


▶ 5158

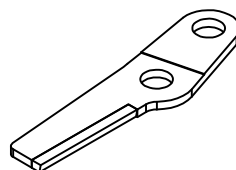
## SCHLAFHORST 5160 - LOWER SCISSOR



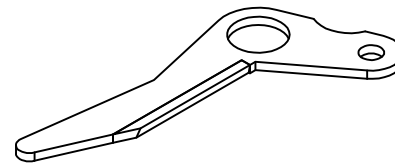
○ 5161  
84 35101 147003779



○ 5162  
81 35101 147011663



● 5163

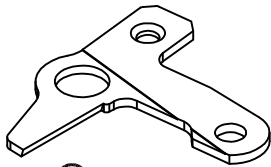


● 5164

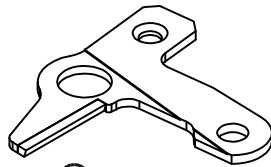
MATERIAL CODE : ● SOLID CARBIDE , ○ HSS , ● BRAZED CARBIDE , ▶ ZIRCONIA CERAMIC ● TIN COATING

# FOR SCHLAFHORST AC5/X5

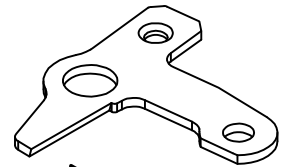
## SCHLAFHORST 5690 - SPLICER SCISSOR



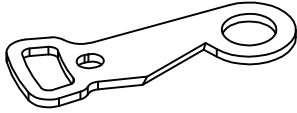
○ 5691  
149-010.699  
148-002.746  
148-006.487



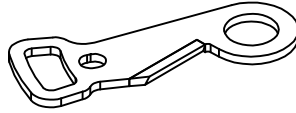
● 5693



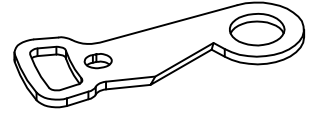
▶ 5697



○ 5692  
149-010.711  
149-017.015  
149-006.490

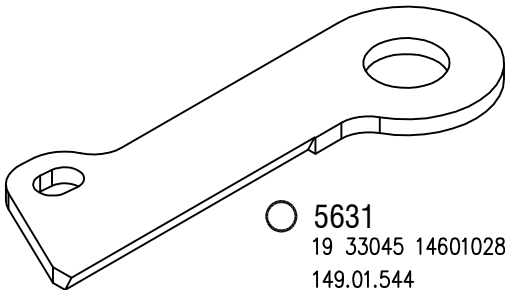


● 5694

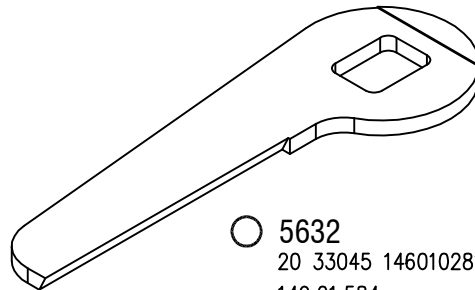


▶ 5698

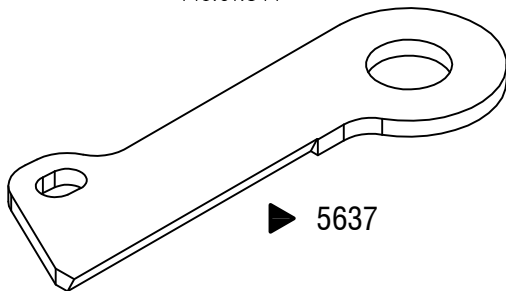
## SCHLAFHORST 5630 - LOWER SCISSOR



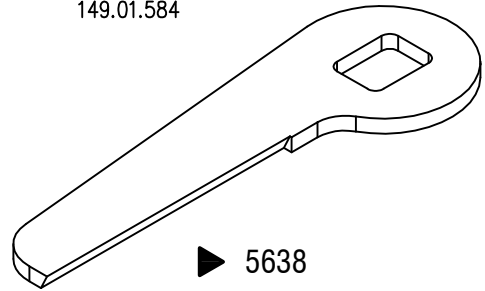
○ 5631  
19 33045 146010280  
149.01.544



○ 5632  
20 33045 146010281  
149.01.584

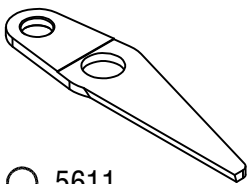


▶ 5637

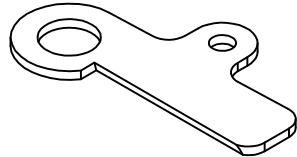


▶ 5638

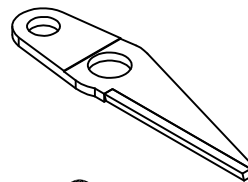
## SCHLAFHORST 5610 - LOWER SCISSOR



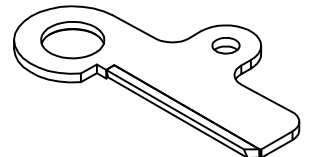
○ 5611  
22 149-013-0866-36111  
149-012.867



○ 5612  
19 149-014-058-36111  
149-012.997

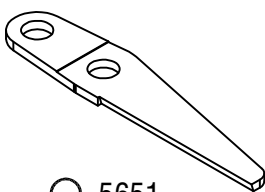


● 5613

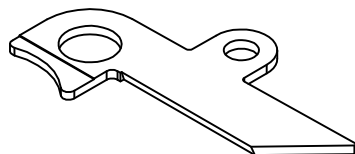


● 5614

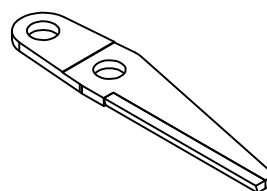
## SCHLAFHORST 5650 - LOWER SCISSOR



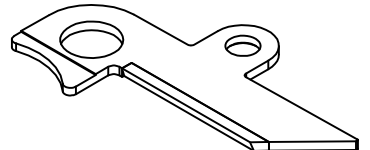
○ 5651



○ 5652



● 5653

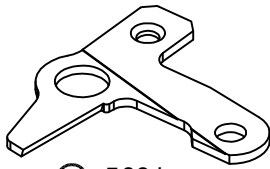


● 5654

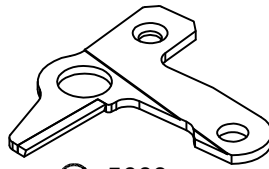
MATERIAL CODE : ● SOLID CARBIDE , ○ HSS , ● BRAZED CARBIDE , ▶ ZIRCONIA CERAMIC ○ TIN COATING

# FOR SCHLAFHORST AC6/X6

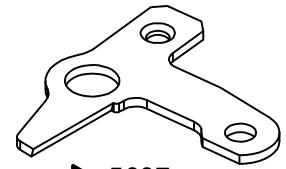
## SCHLAFHORST 5690 - SPLICER SCISSOR



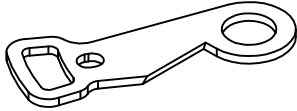
○ 5691  
149-010.699  
148-002.746  
148-006.487



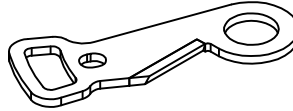
● 5693



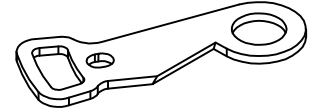
▶ 5697



○ 5692  
149-010.711  
149-017.015  
149-006.490

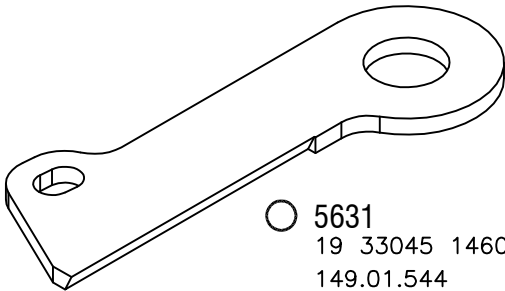


◐ 5694

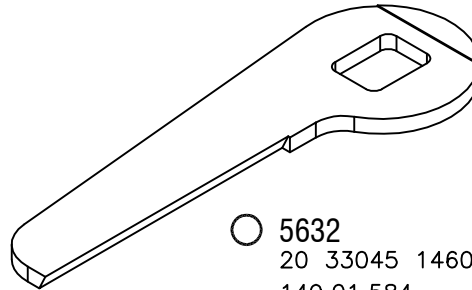


▶ 5698

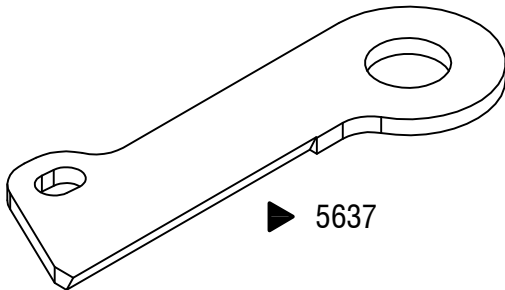
## SCHLAFHORST 5630 - LOWER SCISSOR



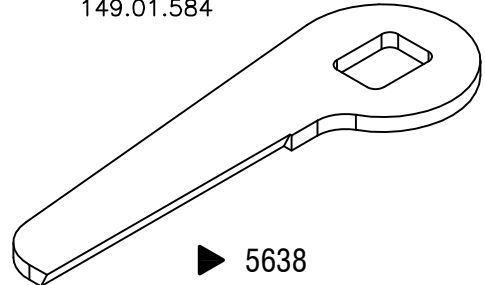
○ 5631  
19 33045 146010280  
149.01.544



○ 5632  
20 33045 146010281  
149.01.584



▶ 5637



▶ 5638

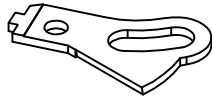
MATERIAL CODE : ● SOLID CARBIDE , ○ HSS , ◐ BRAZED CARBIDE , ▶ ZIRCONIA CERAMIC ⊙ TiN COATING

# FOR SCHLAFHORST COMMON

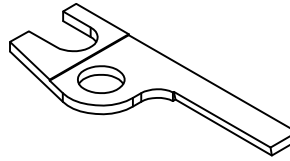
## SCHLAFHORST 5100 / 5170 - TRANSFER HEAD / DOFFER SCISSOR



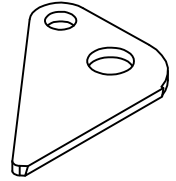
○ 5101  
214 72045 146004806



○ 5101  
227 72045 146004807

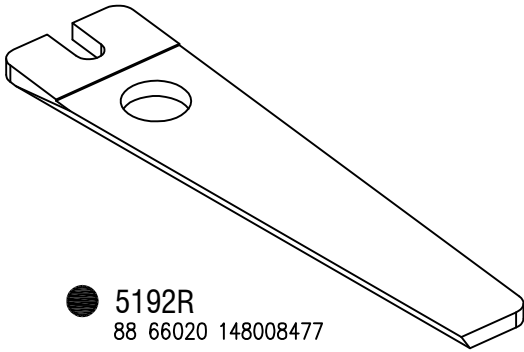


○ 5171  
52030 148000761

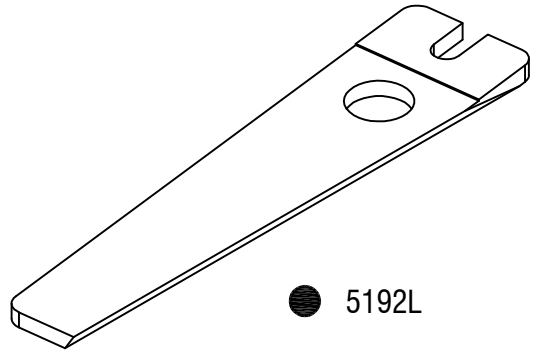


○ 5172  
52030 148005306

## SCHLAFHORST 5190 - FEEDER SCISSOR

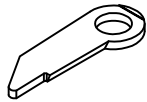


● 5192R  
88 66020 148008477

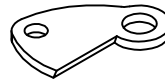


● 5192L

## SCHLAFHORST 5660 - SPPEDSTAR SCISSOR

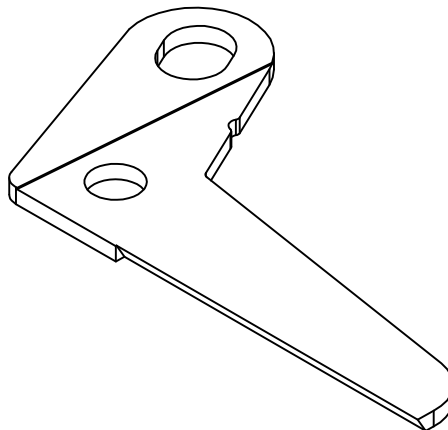


○ 5661



○ 5662

## SCHLAFHORST 5640 - BUNCH PREPRATION SCISSOR

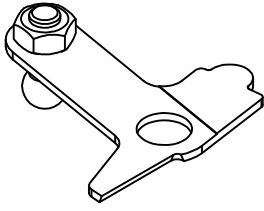


● 5642

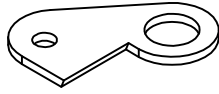
MATERIAL CODE : ● SOLID CARBIDE , ○ HSS, ◐ BRAZED CARBIDE , ▶ ZIRCONIA CERAMIC ⊙ TiN COATING

# FOR SCHLAFHORST AUTOCORO LINKCONER

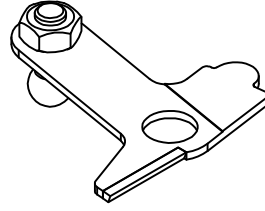
## SCHLAFHORST 5990 - DOFFER SCISSOR



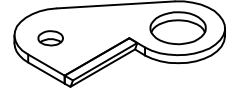
○ 5991  
A-161-004.711



○ 5992

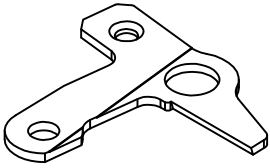


● 5991

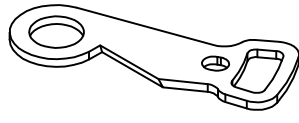


● 5992

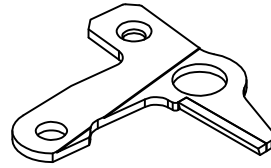
## SCHLAFHORST 5980 - BUNCH SCISSOR



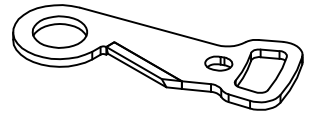
○ 5681



○ 5982

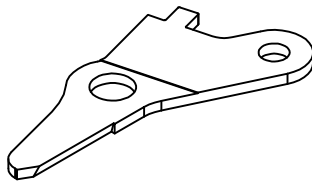


● 5983

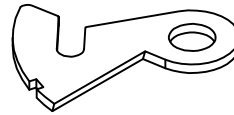


● 5984

## SCHLAFHORST 5000 - DOFFER SCISSOR



● 5001  
GKG 445-548  
138 01 8675

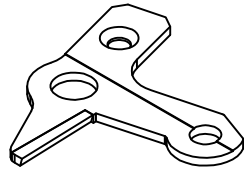


● 5002  
GKG 445-547  
138 01 8676

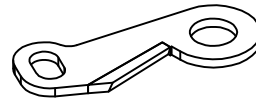
MATERIAL CODE : ● SOLID CARBIDE , ○ HSS , ◐ BRAZED CARBIDE , ► ZIRCONIA CERAMIC ⊙ TiN COATING

# FOR SCHLAFHORST SPECIAL MATERIAL / APPLICATION

## SCHLAFHORST 9910 - SPLICER SCISSOR ADVANCE CUTTING

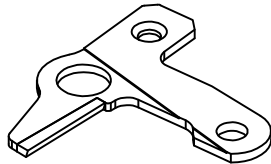


● 9911

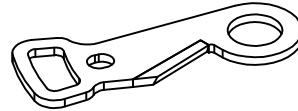


● 9912

## SCHLAFHORST 9920 - SPLICER SCISSOR ADVANCE CUTTING

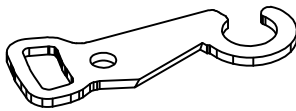


● 9921

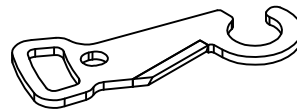


● 9922

## SCHLAFHORST 9XX0 - SPLICER SCISSOR

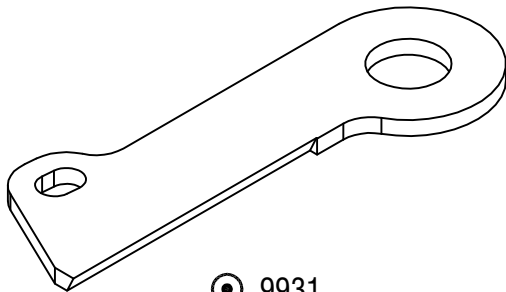


● 9XX2

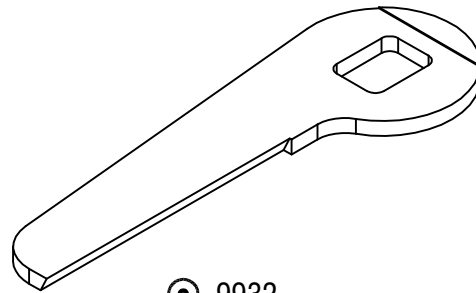


● 9XX4

## SCHLAFHORST 9930 - TiN COATED

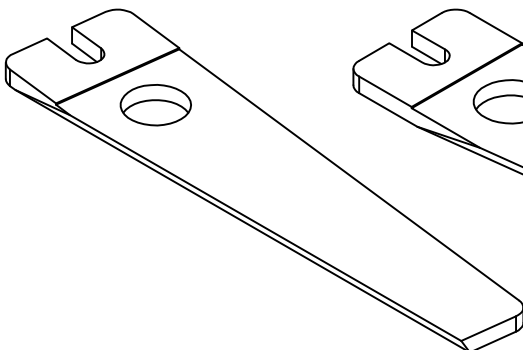


⊙ 9931

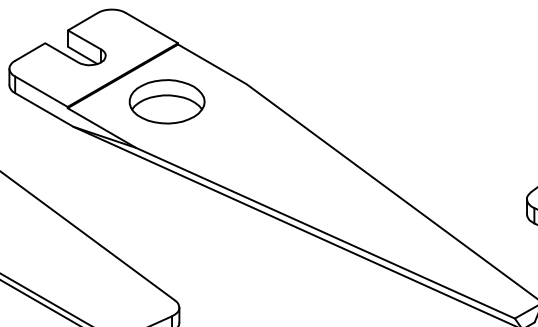


⊙ 9932

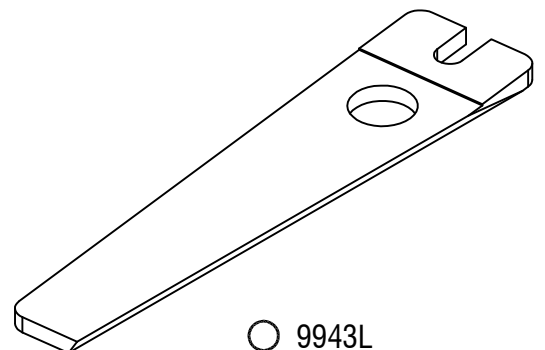
## SCHLAFHORST 9940 - STEEL



○ 9943R



○ 9943



○ 9943L

MATERIAL CODE : ● SOLID CARBIDE , ○ HSS, ● BRAZED CARBIDE , ► ZIRCONIA CERAMIC ⊙ TiN COATING