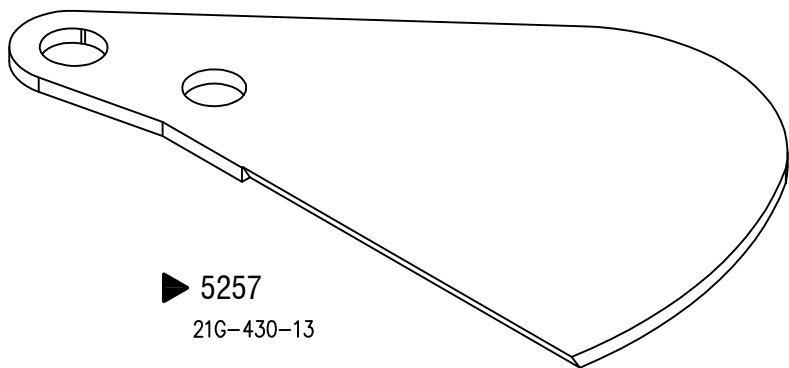
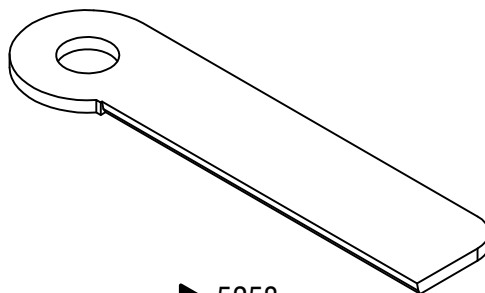


FOR MURATA WINDING

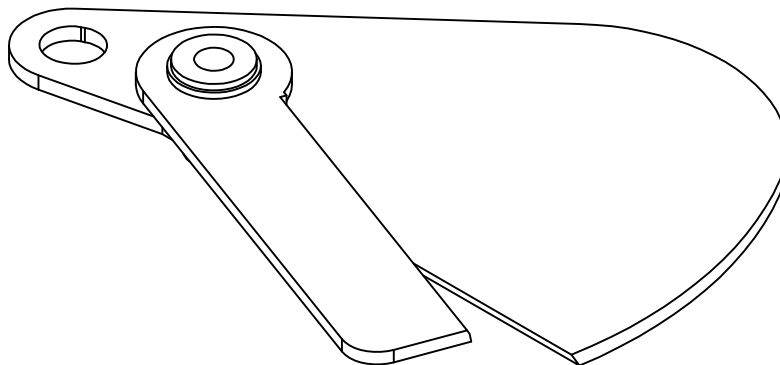
MURATA 5250 - SHUTTER CUTTER



▶ 5257
21G-430-13

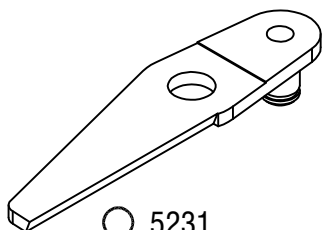


▶ 5258
008-370-5
21G-430-14

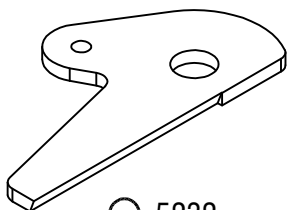


5250C-00

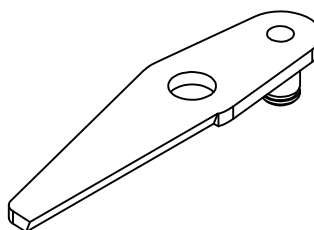
MURATA 5230 - TENSION CUTTER



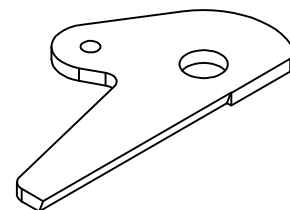
○ 5231
008-603-007



○ 5232
008-603-008

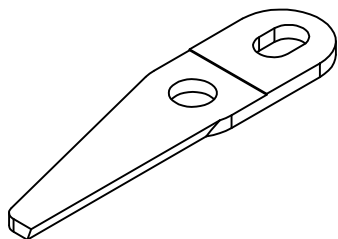


▶ 5237

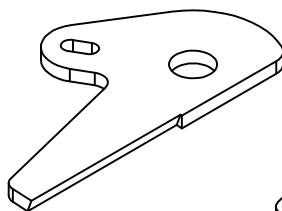


▶ 5238

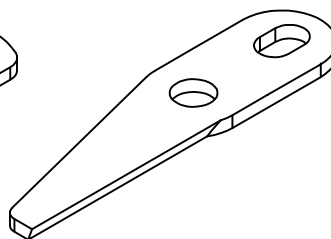
MURATA 5260 - TENSION CUTTER



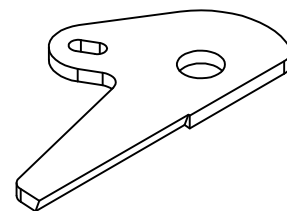
○ 5261



○ 5262

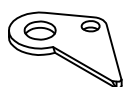


▶ 5267

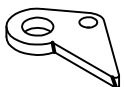


▶ 5268

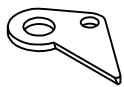
MURATA 5290 - DOFFER SCISSOR



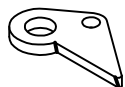
○ 5291
210-401-006



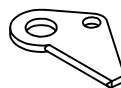
○ 5292



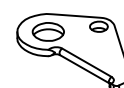
● 5295



● 5296



○ 5290-01

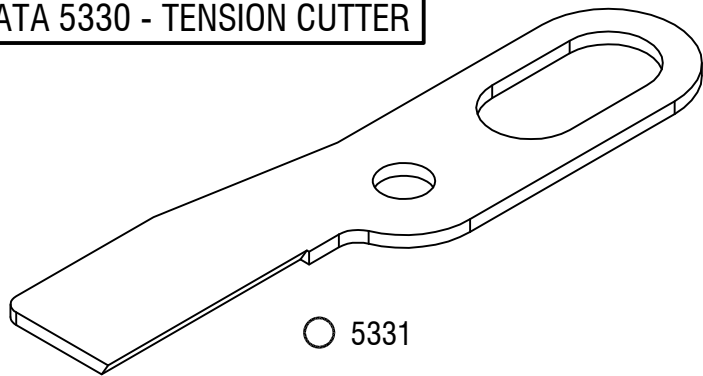


○ 5290-02

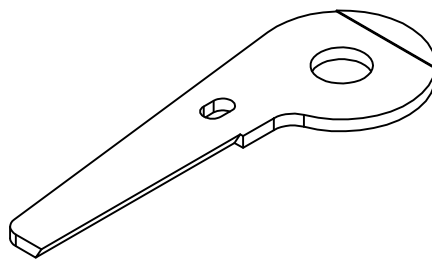
MATERIAL CODE : ● SOLID CARBIDE , ○ HSS , ◐ BRAZED CARBIDE , ▶ ZIRCONIA CERAMIC ○● TIN COATING

FOR MURATA WINDING

MURATA 5330 - TENSION CUTTER

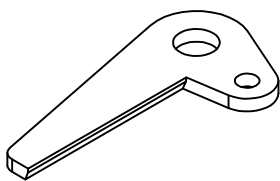


○ 5331

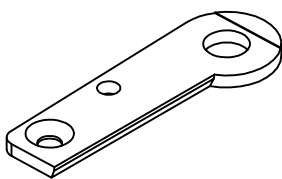


○ 5332

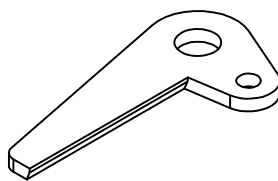
MURATA 5220 - SPLICER / TENSION



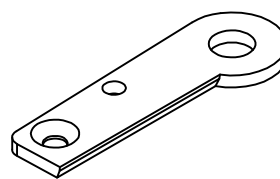
○ 5221



○ 5222

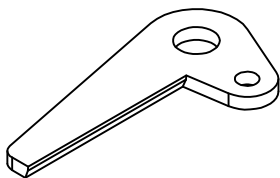


▶ 5227

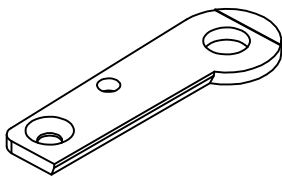


▶ 5228

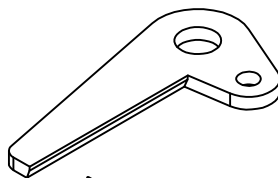
MURATA 5320 - SPLICER / TENSION



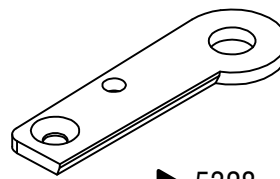
○ 5321



○ 5322

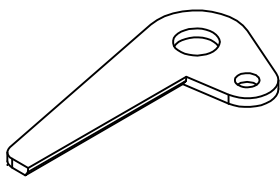


▶ 5327
21A-480-030

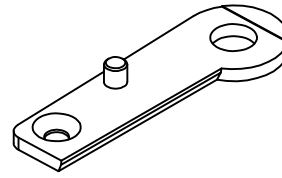


▶ 5328
21A-480-029

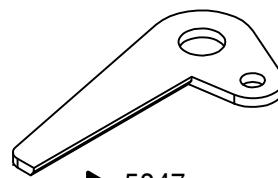
MURATA 5340 - SPLICER / TENSION



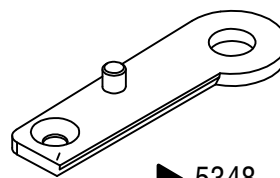
○ 5341



○ 5342

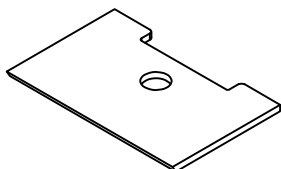


▶ 5347
21A-614A-003

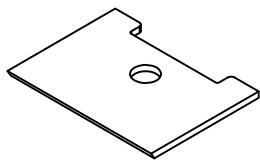


▶ 5348
21A-480-004

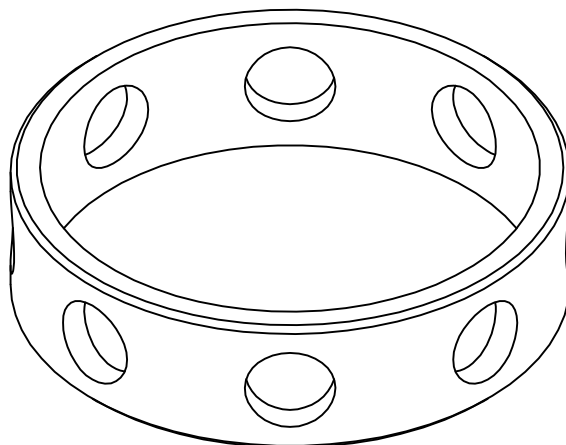
MURATA 5270 - CIRCULAR FEEDER CUTTER



▶ 5276



▶ 5278

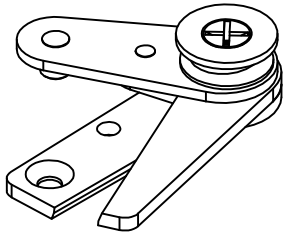


▶ 5277

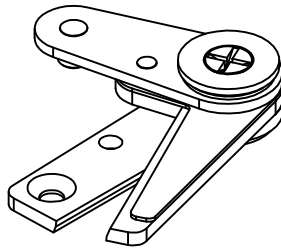
MATERIAL CODE : ● SOLID CARBIDE , ○ HSS , ◐ BRAZED CARBIDE , ▶ ZIRCONIA CERAMIC ● TiN COATING

FOR MURATA WINDING

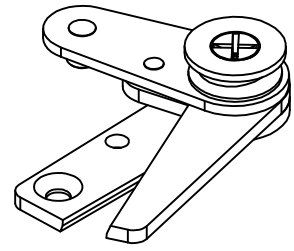
MURATA 5320 - SPLICER / TENSION CUTTER ASSEMBLY



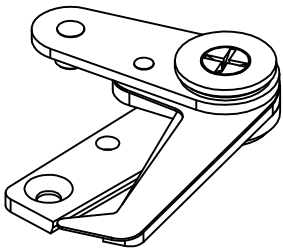
▶ 5320A-00



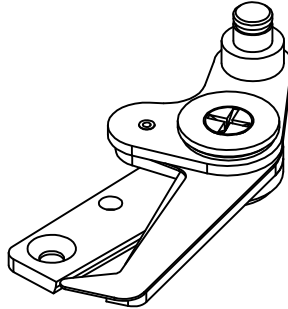
▶ 5320B-00
9C1-320-201



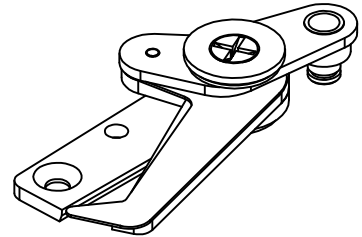
▶ 5320C-00



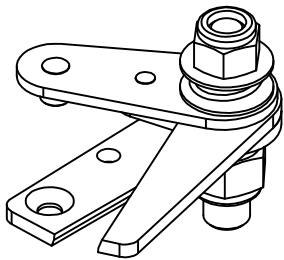
▶ 5320D-00



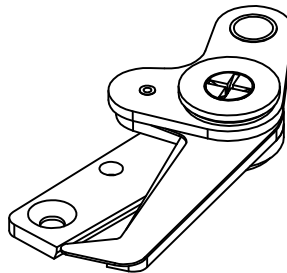
▶ 5320E-00



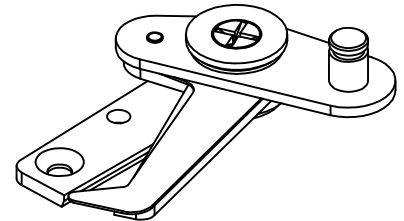
▶ 5320F-00



○ 5320G-00

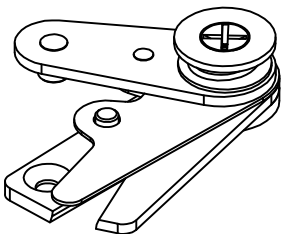


▶ 5320H-00

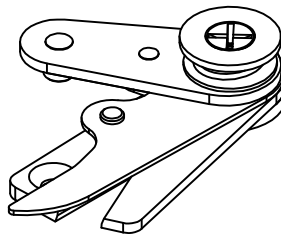


▶ 5320I-00
21A-522-003

MURATA 5340 - SPLICER / TENSION CUTTER ASSEMBLY



▶ 5340Y-00
21A-480-030



▶ 5340Z-00
21A-480-029

MATERIAL CODE : ● SOLID CARBIDE , ○ HSS , ◐ BRAZED CARBIDE , ▶ ZIRCONIA CERAMIC ● TIN COATING