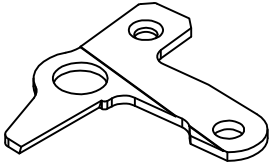
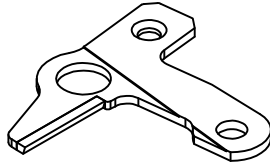


# FOR SCHLAFHORST 338

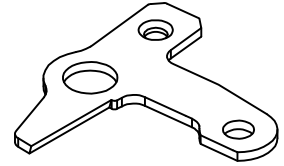
## SCHLAFHORST 5180 - SPLICER SCISSOR



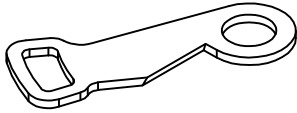
○ 5181  
(5691)  
255 36801 148002746



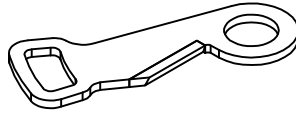
● 5183  
(5693)



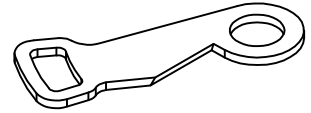
▶ 5187  
(5697)



○ 5182  
250 36801 148005258

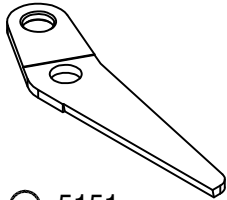


● 5184

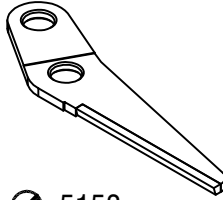


▶ 5188

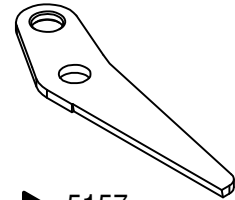
## SCHLAFHORST 5150 - LOWER SCISSOR



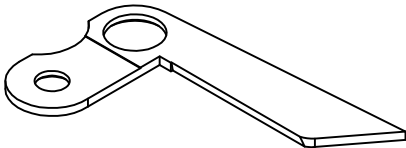
○ 5151  
20 36060 138015744



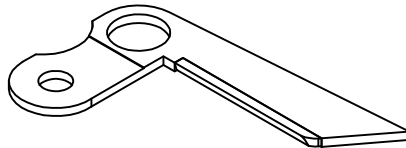
● 5153



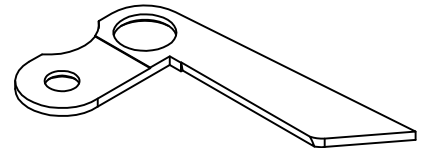
▶ 5157



○ 5152  
16 36060 148012218

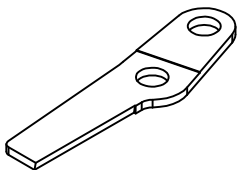


● 5154

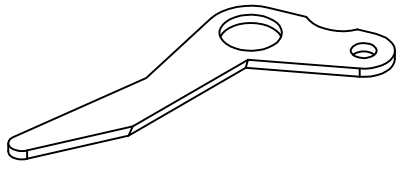


▶ 5158

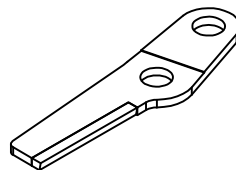
## SCHLAFHORST 5160 - LOWER SCISSOR



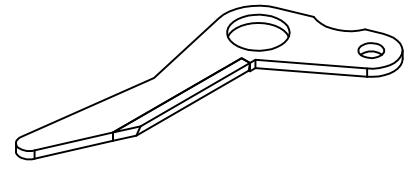
○ 5161  
84 35101 147003779



○ 5162  
81 35101 147011663



● 5163



● 5164

MATERIAL CODE : ● SOLID CARBIDE , ○ HSS , ● BRAZED CARBIDE , ▶ ZIRCONIA CERAMIC ● TIN COATING